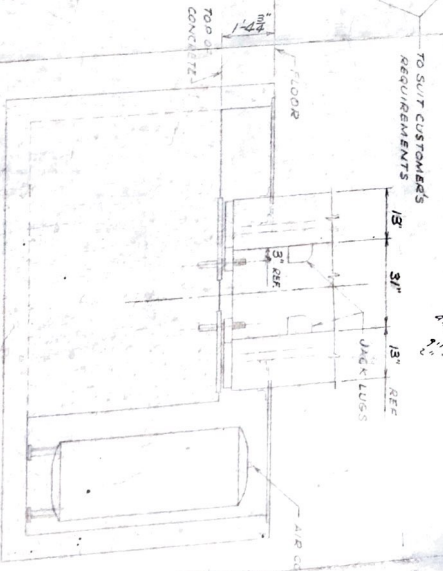
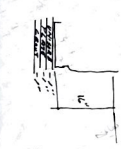


SEC. A-A (FRONT OF PRESS)



SEC. B-B (RIGHT SIDE OF PRESS)



TYP. ANCHOR BOLT DETAIL  
NO SCALE



NOTES

- 1. REINFC. CONCRETE FDN. & INT. COVER SHALL BE DESIGNED & SUPPLIED BY CUSTOMER TO SUIT SITE CONDITIONS.
- 2. ALL STEEL SHIMS TO BE LEVEL, & SUPPORT PRESS.

TIGHTEN ANCHOR BOLT NUTS AFTER LEVELING

**CERTIFIED**  
**PACIFIC PRESS & SHEAR CORP.**  
 400 D.B. - 54  
 400 D.B. - 54

NO.	DESCRIPTION	QTY.	UNIT	PRICE	TOTAL
1	ANCHOR BOLTS	4	EA.	1.50	6.00
2	WASHERS	4	EA.	0.50	2.00
3	NUTS	4	EA.	0.50	2.00
4	STEEL SHIMS	4	EA.	0.50	2.00
5	LEVELING BOLTS	4	EA.	1.50	6.00
6	LEVELING NUTS	4	EA.	0.50	2.00
7	LEVELING WASHERS	4	EA.	0.50	2.00
8	LEVELING SHIMS	4	EA.	0.50	2.00
9	LEVELING BOLTS	4	EA.	1.50	6.00
10	LEVELING NUTS	4	EA.	0.50	2.00
11	LEVELING WASHERS	4	EA.	0.50	2.00
12	LEVELING SHIMS	4	EA.	0.50	2.00
13	LEVELING BOLTS	4	EA.	1.50	6.00
14	LEVELING NUTS	4	EA.	0.50	2.00
15	LEVELING WASHERS	4	EA.	0.50	2.00
16	LEVELING SHIMS	4	EA.	0.50	2.00
17	LEVELING BOLTS	4	EA.	1.50	6.00
18	LEVELING NUTS	4	EA.	0.50	2.00
19	LEVELING WASHERS	4	EA.	0.50	2.00
20	LEVELING SHIMS	4	EA.	0.50	2.00

HOBART CORP. # 6942

PACIFIC PRESS & SHEAR CORP.  
 400 D.B. - 54